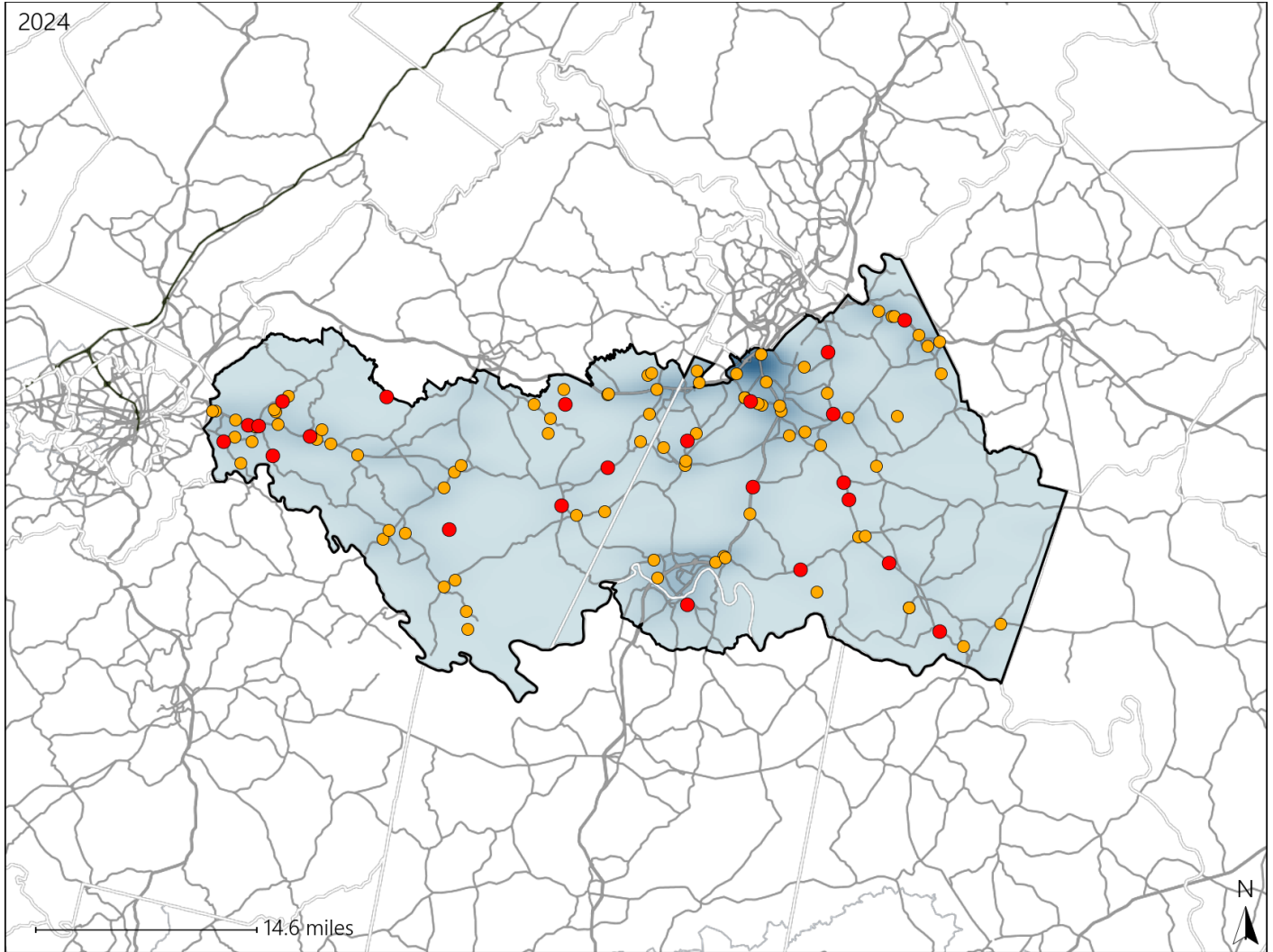


# Virginia House District 51 Crash Statistics

Report Generated March, 2025

	Count	Highest Time Period(s)	Highest Day(s)	Highest Month(s)
<b>Fatal Crashes</b>	<b>23</b>	3:00pm - 5:59pm	Tuesday	September
<b>Resulting Fatalities</b>	<b>25</b>	(30%)	(26%)	(22%)
<b>Serious Injury Crashes</b>	<b>84</b>	3:00pm - 5:59pm	Monday - Saturday	October
		(21%)	(34%)	(14%)



### House District 51 Crashes

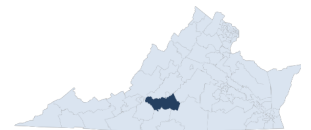
Interstate Crashes

- Fatal
- Serious Injury

Non-interstate Crashes

- Fatal
- Serious Injury

The blue gradient represents the density of all crashes.

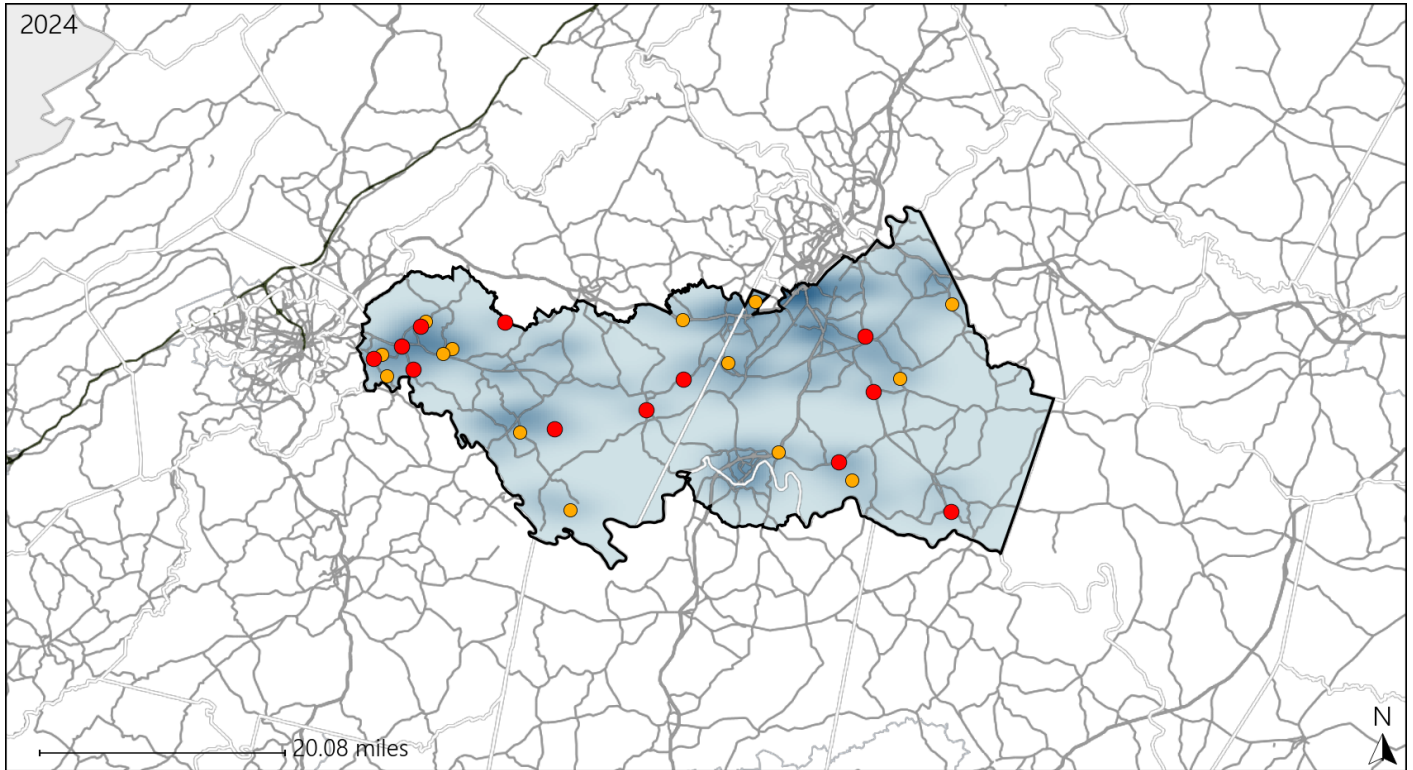


Available Crash Data - Calendar Year (CY)	CY 2021	CY 2022	CY 2023	CY 2024
Total Crashes	975	1010	1085	1162
Fatal Crashes	20	18	21	23
Injury Crashes	299	276	284	320

# Virginia House District 51 Alcohol Crash Statistics

Report Generated March, 2025

	Count	Highest Time Period(s)	Highest Day(s)	Highest Month(s)
<b>Fatal Crashes</b>	<b>12</b>	<b>9:00pm - 11:59pm</b>	<b>Friday • Sunday</b>	<b>January • July</b>
<b>Resulting Fatalities</b>	<b>13</b>	<b>Midnight - 2:59am</b> (66%)	<b>(50%)</b>	<b>(34%)</b>
<b>Serious Injury Crashes</b>	<b>14</b>	<b>9:00pm - 11:59pm</b> (36%)	<b>Sunday</b> (29%)	<b>July</b> (29%)



### House District 51 Alcohol-Related Crashes

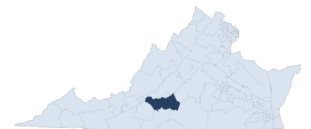
Interstate Crashes

- Fatal
- Serious Injury

Non-interstate Crashes

- Fatal
- Serious Injury

The blue gradient represents the density of all alcohol-related crashes.

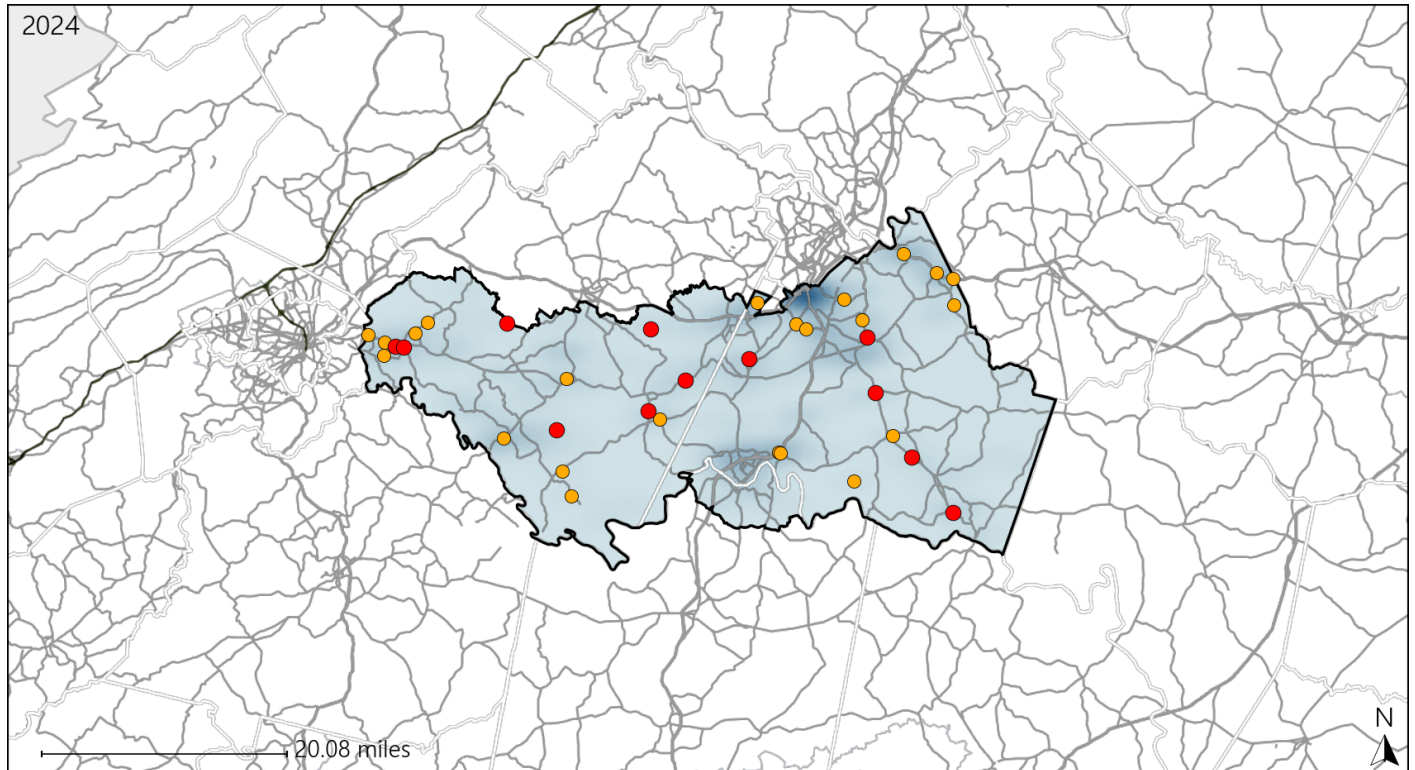


Available Crash Data - Calendar Year (CY)	CY 2021	CY 2022	CY 2023	CY 2024
Total Crashes	975	1010	1085	1162
Fatal Crashes	20	18	21	23
Injury Crashes	299	276	284	320
Alcohol-Related Fatal Crashes	2	5	7	12
Percent of Alcohol-Related Fatal Crashes to Total Fatal Crashes	10%	28%	33%	52%
Alcohol-Related Injury Crashes	25	19	21	39
Percent of Alcohol-Related Injury Crashes to Total Injury Crashes	8%	7%	7%	12%

# Virginia House District 51 Speed Crash Statistics

Report Generated March, 2025

	Count	Highest Time Period(s)	Highest Day(s)	Highest Month(s)
<b>Fatal Crashes</b>	<b>12</b>	<b>3:00pm - 5:59pm</b>	<b>Saturday • Sunday</b>	<b>September</b>
<b>Resulting Fatalities</b>	<b>14</b>	(33%)	(50%)	(25%)
<b>Serious Injury Crashes</b>	<b>23</b>	<b>9:00pm - 11:59pm</b>	<b>Tuesday</b>	<b>October</b>
		(22%)	(26%)	(17%)



## House District 51 Speed-Related Crashes

Interstate Crashes

Non-interstate Crashes

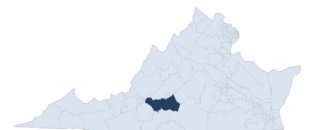
● Fatal

● Fatal

● Serious Injury

● Serious Injury

The blue gradient represents the density of all speed-related crashes.

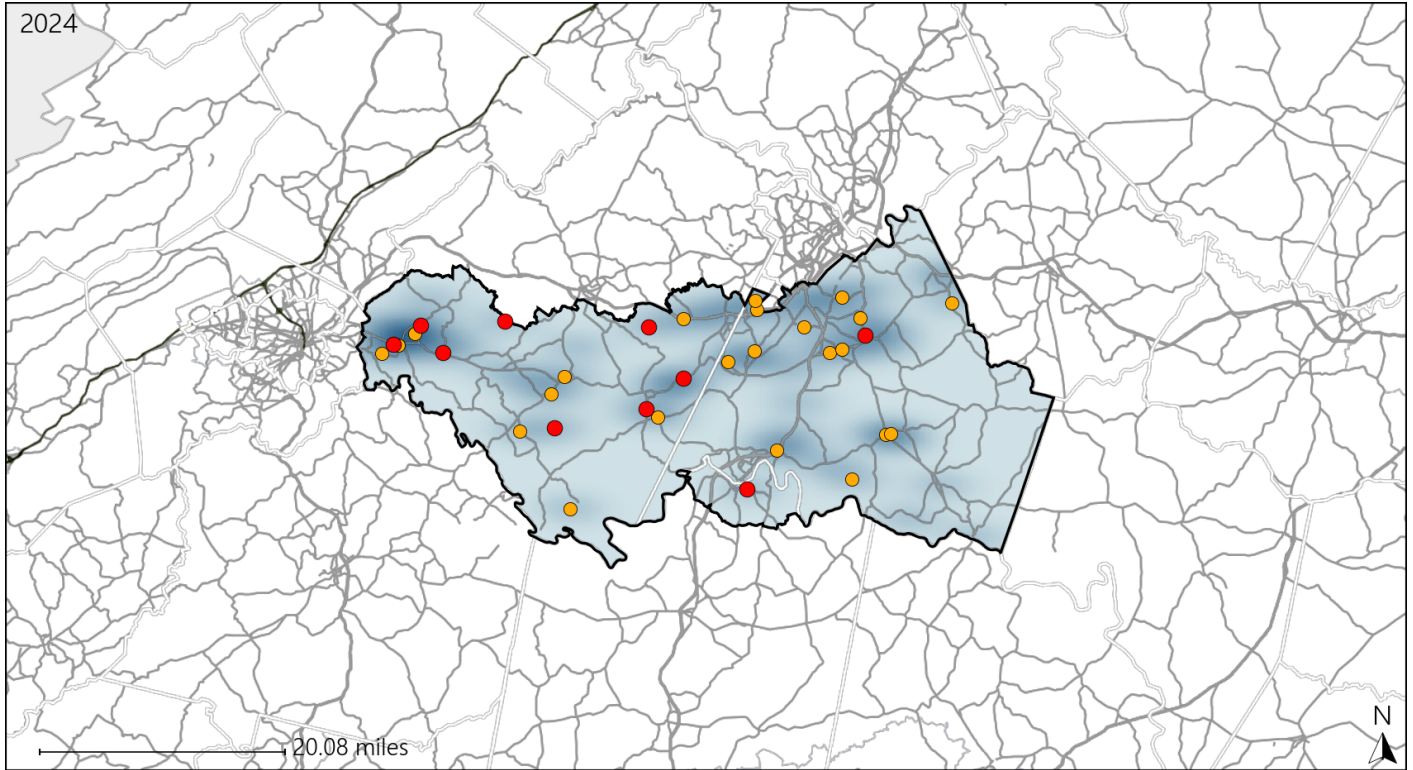


Available Crash Data - Calendar Year (CY)	CY 2021	CY 2022	CY 2023	CY 2024
Total Crashes	975	1010	1085	1162
Fatal Crashes	20	18	21	23
Injury Crashes	299	276	284	320
Speed-Related Fatal Crashes	10	5	8	12
Percent of Speed-Related Fatal Crashes to Total Fatal Crashes	50%	28%	38%	52%
Speed-Related Injury Crashes	73	62	63	76
Percent of Speed-Related Injury Crashes to Total Injury Crashes	24%	22%	22%	24%

# Virginia House District 51 Unrestrained Crash Statistics

Report Generated March, 2025

	Count	Highest Time Period(s)	Highest Day(s)	Highest Month(s)
<b>Fatal Crashes</b>	<b>10</b>	<b>3:00pm - 5:59pm</b>	<b>Sunday</b>	<b>October</b>
<b>Unrestrained Fatalities</b>	<b>10</b>	(50%)	(30%)	(30%)
<b>Serious Injury Crashes</b>	<b>23</b>	<b>3:00pm - 5:59pm</b>	<b>Saturday</b>	<b>August - June</b>
		(26%)	(26%)	(26%)



## House District 51 Unrestrained-Related Crashes

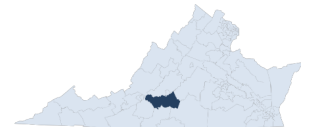
Interstate Crashes

- Fatal
- Serious Injury

Non-interstate Crashes

- Fatal
- Serious Injury

The blue gradient represents the density of all unrestrained-related crashes.



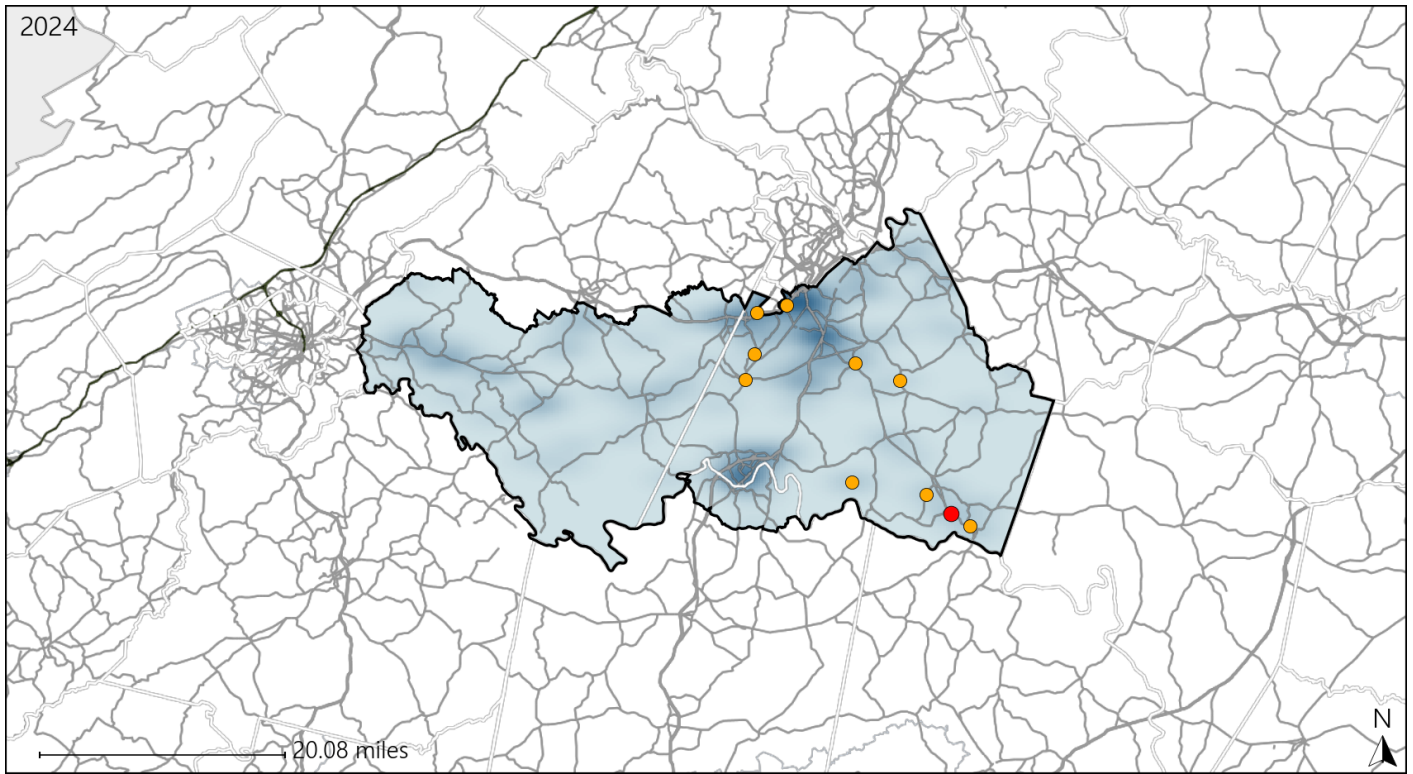
Available Crash Data - Calendar Year (CY)	CY 2021	CY 2022	CY 2023	CY 2024
<b>Total Crashes</b>	<b>975</b>	<b>1010</b>	<b>1085</b>	<b>1162</b>
<b>Fatalities</b>	<b>21</b>	<b>18</b>	<b>25</b>	<b>25</b>
<b>Injuries</b>	<b>429</b>	<b>388</b>	<b>433</b>	<b>472</b>
<b>Unrestrained Fatalities</b>	<b>8</b>	<b>3</b>	<b>9</b>	<b>10</b>
<b>Percent of Unrestrained Fatalities to Total Fatalities</b>	<b>38%</b>	<b>17%</b>	<b>36%</b>	<b>40%</b>
<b>Unrestrained Injuries</b>	<b>47</b>	<b>42</b>	<b>49</b>	<b>60</b>
<b>Percent of Unrestrained Injuries to Total Injuries</b>	<b>11%</b>	<b>11%</b>	<b>11%</b>	<b>13%</b>



# Virginia House District 51 Distracted Driving Crash Statistics

Report Generated March, 2025

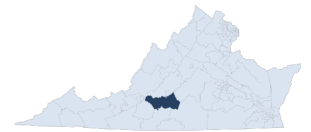
	Count	Highest Time Period(s)	Highest Day(s)	Highest Month(s)
<b>Fatal Crashes</b>	<b>1</b>	<b>9:00pm - 11:59pm</b>	<b>Saturday</b>	<b>September</b>
<b>Resulting Fatalities</b>	<b>1</b>	(100%)	(100%)	(100%)
<b>Serious Injury Crashes</b>	<b>9</b>	<b>3:00pm - 5:59pm 6:00pm - 8:59pm</b>	<b>Saturday * Thursday</b>	<b>June * March</b>
		(44%)	(44%)	(44%)



## House District 51 Distracted Driving-Related Crashes

- |                    |                        |
|--------------------|------------------------|
| Interstate Crashes | Non-interstate Crashes |
| ● Fatal            | ● Fatal                |
| ⊕ Serious Injury   | ● Serious Injury       |

The blue gradient represents the density of all distracted driving-related crashes.



Available Crash Data - Calendar Year (CY)	CY 2021	CY 2022	CY 2023	CY 2024
Total Crashes	975	1010	1085	1162
Fatal Crashes	20	18	21	23
Injury Crashes	299	276	284	320
Distracted Driving-Related Fatal Crashes	2	1	0	1
Percent of Distracted Driving-Related Fatal Crashes to Total Fatal Crashes	10%	6%	0%	4%
Distracted Driving-Related Injury Crashes	52	49	45	48
Percent of Distracted Driving-Related Injury Crashes to Total Injury Crashes	17%	18%	16%	15%